



Forum Fayards

Settle your premises and your offices next door to Geneva

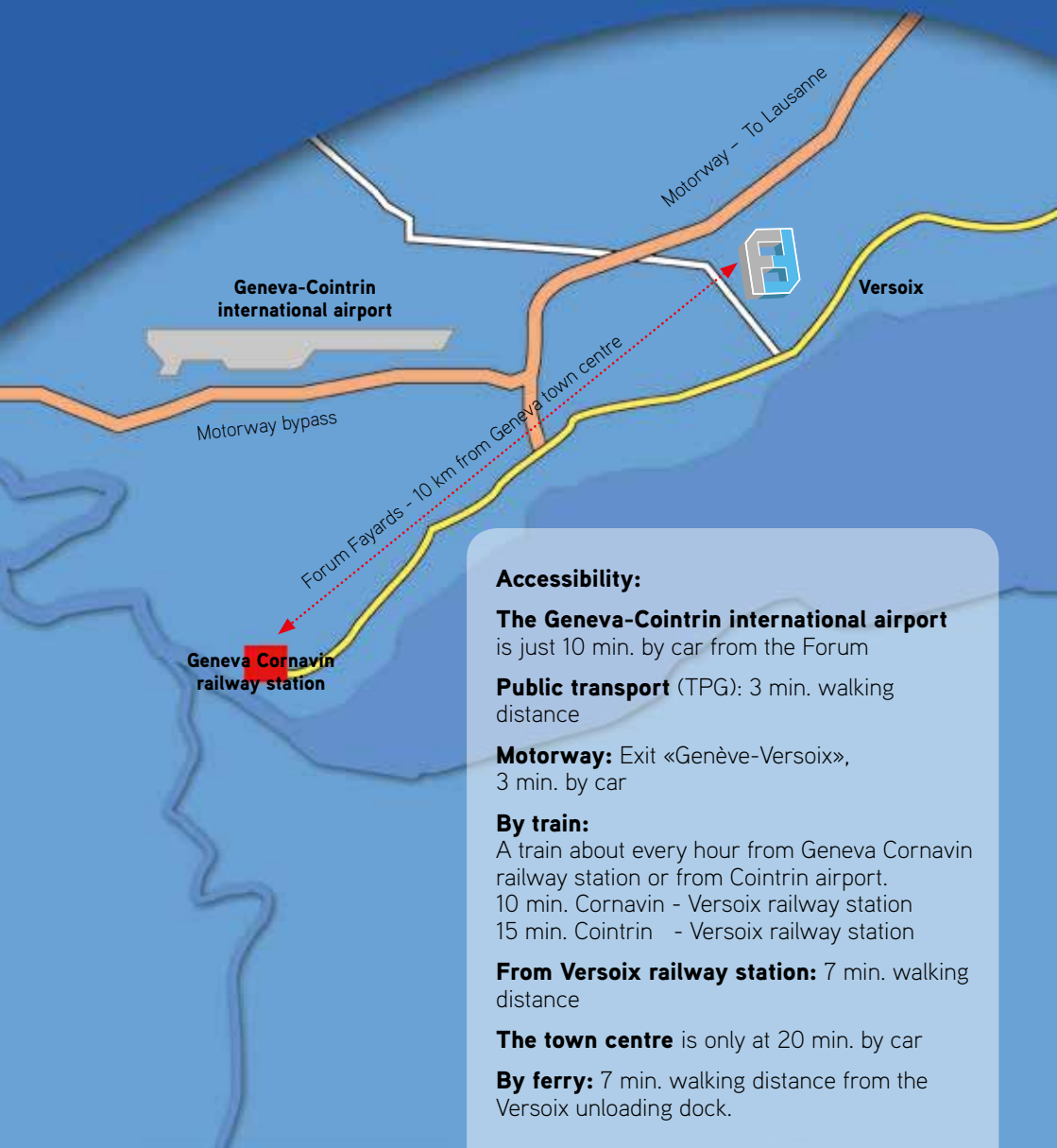


**Very attractive
rental terms**



Compagnie **Foncière du Léman**

Located two steps from the motorway, 10 min. from Geneva international airport, 13 min. from Cornavin railway station and only 15 min. from the town centre of Geneva, the Fayards Forum is easily accessible by all kind of means of transport.



Accessibility:

The Geneva-Cointrin international airport is just 10 min. by car from the Forum

Public transport (TPG): 3 min. walking distance

Motorway: Exit «Genève-Versoix», 3 min. by car

By train:

A train about every hour from Geneva Cornavin railway station or from Cointrin airport.
10 min. Cornavin - Versoix railway station
15 min. Cointrin - Versoix railway station

From Versoix railway station: 7 min. walking distance

The town centre is only at 20 min. by car

By ferry: 7 min. walking distance from the Versoix unloading dock.



This industrial and administrative building offers outstanding accessibilities and many different fitting-out possibilities.





Very attractive rental terms

Parking available



**Financing
of your fitting-out!**

**All surfaces are equipped
with false flooring,
sanitation and
a very efficient
air-condition system.**



All surfaces are left to the tenant's fitting-out ideas and desires.



The common sections are spacious and pleasing.



The spaces are filled with amazing natural day-light thanks to the two central atriums.



www.forumfayards.ch



A calm environment and a beautiful view
of the surrounding countryside.



Compagnie Foncière du Léman

For any additional informations or a visit of offices:
Compagnie Foncière du Léman SA
10, route de l'Aéroport – CP 209 – 1215 Genève 15
Tél: +41 (0)22 723 29 22 – Fax: +41 (0)22 788 08 04
info@fonciere.ch – www.fonciere.ch



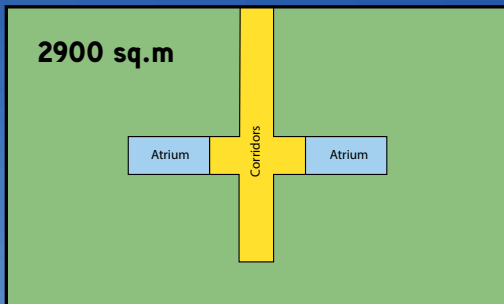
Still 6970 sq.m to let

 To let

 Hired

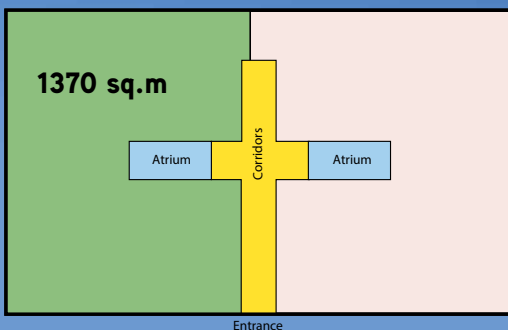
Lower bottom floor

Still 2900 sq.m to let



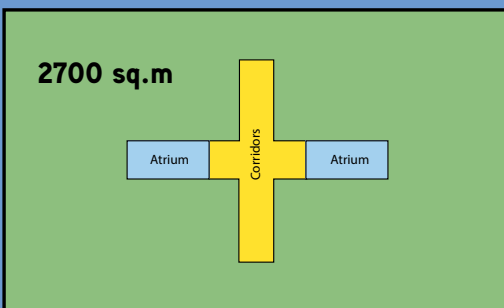
Upper bottom floor

Still 1370 sq.m to let



First floor

Still 2700 sq.m to let



The mentioned sq.m are as an indication.

